



# SAFETY CLOTHING

*for Industry*

**INDUSTRIAL GLOVES  
COMPANY**

700 GARFIELD BLVD., DANVILLE, ILLINOIS

ESTABLISHED 1910

---

# **INDUSTRIAL GLOVES COMPANY**

---

Main Office and Factory: DANVILLE, ILLINOIS  
700 Garfield Blvd., Phone 6240. Cable Address "Steelgrip"

## **BRANCH OFFICES**

DETROIT  
16410 Hamilton

NEWARK  
1060 Broad



## Clothing Insurance!

hazardous occupations are equipped with adequate clothing, production speeds up and the line. Adequate protection for the worker, saves expense, builds good will and is a sign of efficient industrial management.

# “ . . . with not nearly enough protect the men you have”.

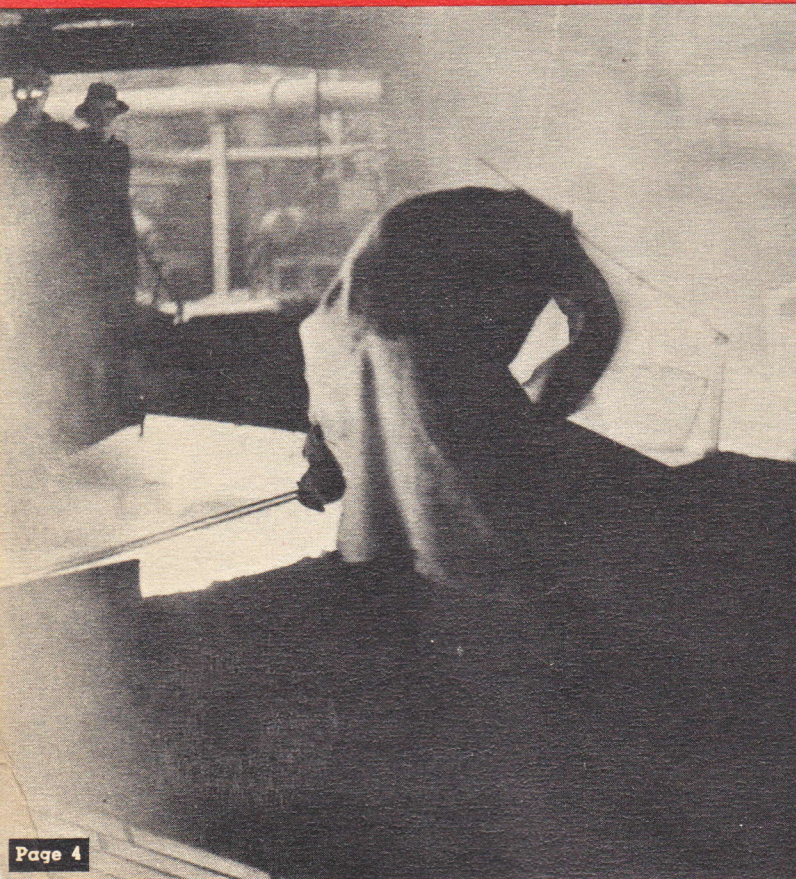
When an accident occurs, there are many losses beside the loss and risk and actual injury suffered by any one worker. Production is usually stopped and machines stand idle . . . because the man's fellow workers will invariably and naturally gather on the scene. The steady flow of production is disrupted and schedules thrown into confusion. There is a natural shock to other workers and a tend-

ency to hold "post mortems." Thus, often an entire day or more may be wasted before things get back to normal. And when you add the cost of breaking a new man in on the job and the loss in production while he's learning . . . it is easy to see the total far outweighs the small cost of proper protection.

**The proper Safety Clothing is "good business" in any man's language**

Safety clothing not only protects the worker from intense heat, but keeps him at his job . . . without delay or upset to schedules.  
**SAFETY IS INSURANCE.**

Safety clothing not only enables the welder to keep at his task, but keeps his companions at work as well. The smooth flow of production in other departments beside his own is assured.  
**SAFETY IS INSURANCE.**



# man power to meet war needs,

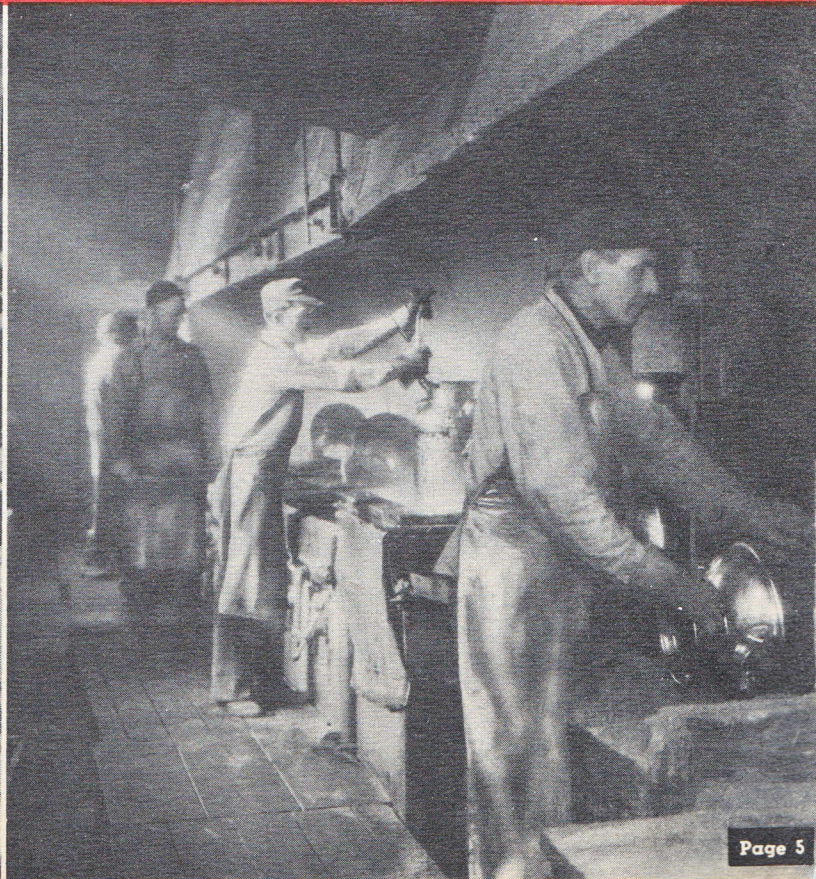
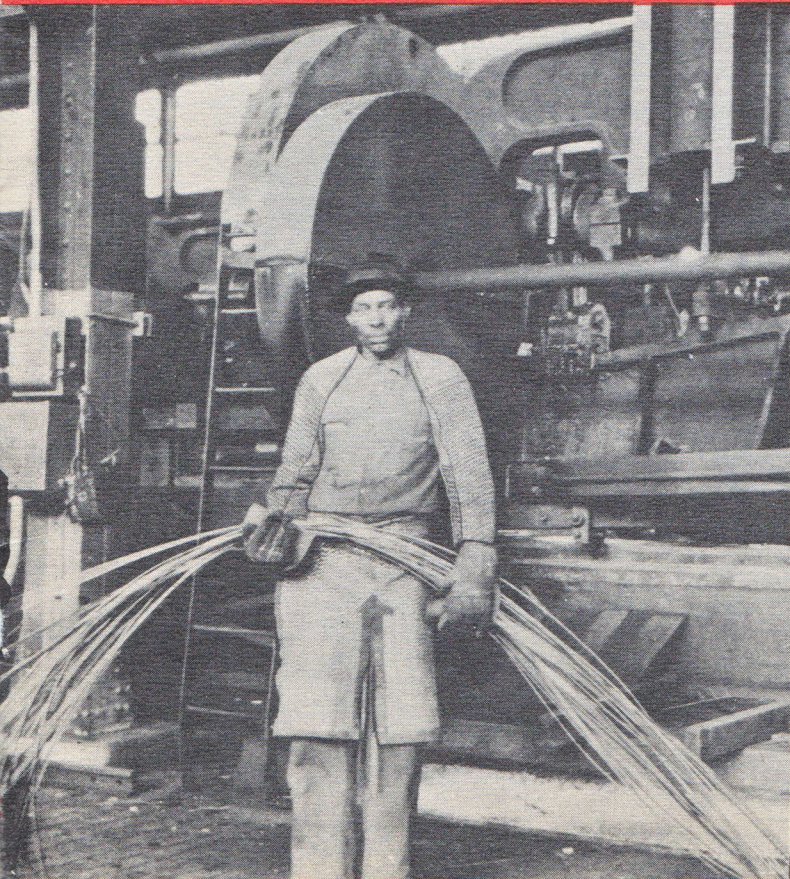
Protective clothing, properly selected, is an economy . . . a dividend-bearing investment. It serves to keep the experienced man at his job, and the full staff at work, machines running, assembly lines flowing and production swinging along at its normal pace.

To a great extent, the quality and quantity of production as well as the reputation of a plant are in the hands of its workmen. Since this is so, many large and long-experienced employers believe in

surrounding production and reputation with every possible safeguard. They say that the provision of proper safety clothing results in a far better spirit among their workmen, a cooperation and zeal for work that shows up in production at once. Workers "take hold" more confidently. Records show that protected workmen are by far the most productive, and wise executives today are realizing more and more the sound economy that results from the provision of the proper safety clothing.

Safety clothing not only protects men in scrap handling but eliminates the commotion and excitement attendant upon an injury, the sure shut-down of the machines or departments they service.  
**SAFETY IS INSURANCE.**

Safety clothing not only enables men to handle hot objects more speedily and efficiently, but encourages harmonious working conditions. A properly protected workman is a better worker.  
**SAFETY IS INSURANCE.**



# *Safety Clothing must be designed for the need*



The safety needs of workers vary from industry to industry, often from plant to plant.

Special conditions are encountered which only experience can satisfy. The Industrial Gloves Company has designed, and manufactures, more than 3800 industrial safeguards, each of which meets a special need. Requirements may vary greatly in a glove. One type may need steel ribbon reinforcement throughout, whereas another may need only sewing with steel thread. Some mitts require a special patch, wool lining or "quilting" in certain places. In others, the lining, or patch, may be omitted entirely. The same varying needs are found in leggings, in sleeves and arm protectors, in aprons, chaps and suits.



It is important that a garment not only provide protection but give full freedom of

action and maximum comfort as well. Lack of either quality may hamper the worker's efficiency and impair the real value of the garment.

The correct design and manufacture of Steel-Grip Gloves and Safety Clothing are the result of this company's long experience in the field . . . are an important part of the value found in every Steel-Grip Safeguard.



## **Special Designing Service**

Should the broad line of Steel-Grip Safeguards not cover your particular needs, our special designing service is available to you. Your specifications are developed into working patterns, your Safeguard is made, tested and approved under your actual working conditions; then your order is filled, and the pattern placed on file against your future requirements.





# GLOVES AND MITTENS

STEEL-GRIP reinforced gloves, mittens and handguards, originally designed and placed on the market in 1910, successfully combine durability of steel and flexibility of leather. They assure maximum protection on the toughest jobs at minimum cost per hour: more than 900 different steel-reinforced safeguards to meet industry's varied needs.



Safeguard  
No. 644



Safeguard  
No. 1050



Safeguard  
No. 655

## Steel Ribbons over Leather Strips

Chrome tanned cowhide. Palm and fingers reinforced with steel ribbons over strips of tough leather. In reversible type (No. 1050) back also steel reinforced. Both sewed with steel thread. Thumb reinforced with patches and strap.

No. 644—4" gauntlet.

No. 604—Same, 2" band.

~~No. 1050~~ Reversible, 4" gauntlet. Suggest No. 644

~~No. 1000~~ Same, 2" band. Suggest No. 604

## Steel Ribbons—Horizontal—Palm Patched

Backed by more than a quarter century of successful service in Industry. Chrome leather with palm patch gives added protection without loss of flexibility. Wearing surfaces reinforced with steel ribbons. Thumb reinforced with patch and strap. Sewed with steel thread.

No. 655—4" gauntlet.

No. 605—Same, 2" band.

## Steel Ribbons—Horizontal

Strong durable glove of chrome leather—reinforced on palm and fingers with steel ribbons. Patch and strap give added strength to thumb. Glove sewed with steel thread.

No. 640—4" gauntlet.

No. 600—Same, 2" band.

## Steel Ribbons—Diagonal

Chrome leather glove meets practically every heavy duty requirement; especially suited for handling scrap. Palm and fingers reinforced with steel ribbons diagonally staggered. Thumb patch and strap. Steel stitched throughout.

No. 633—4" gauntlet.

~~No. 603~~ Same, 2" band.

Suggest No. 605

## Steel Sewed—No Reinforcement

No better general purpose glove made. Chrome tanned cowhide of uniform weight, steel sewed, practically rip-proof. Thumb patched and strapped.

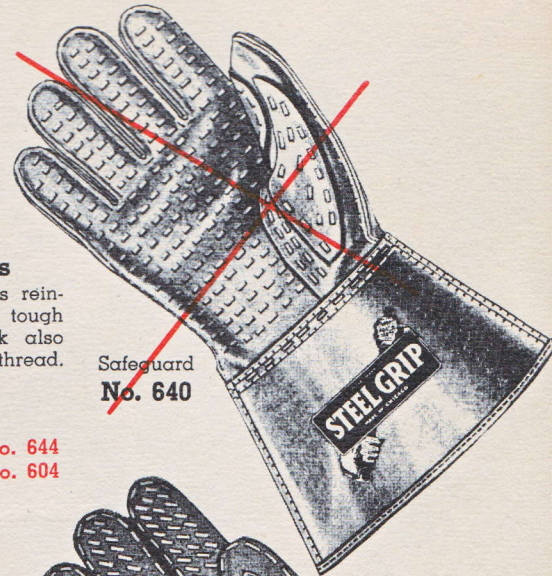
No. 660—4" gauntlet.

No. 616—Same, 2" band.

~~No. 1060~~ Same as No. 660, grain leather.

~~No. 1016~~ Same as No. 616, grain leather.

Suggest Nos. 660 and 616



Safeguard  
No. 640



Safeguard  
No. 633



Safeguard  
No. 660

OLD HICKORY  
**STEEL GRIP**  
MADE IN U.S.A.

REG. U.S. PAT. OFF.

# GLOVES • HANDGUARDS



Safeguard  
No. 609

### Steel Ribbons—Vertical—Palm Patched

Specially designed chrome leather glove reinforced with steel ribbons placed lengthwise, staggered to prevent cutting through by sharp edged materials. Extra leather palm patch. Thumb reinforced with patch and strap.

No. 609—Short glove, 2" band. No. 699—Same, 4" gauntlet.

### Steel Ribbons—Vertical—Extra Large Patch

Glove specially suited for jobs requiring extra protection and for those where material handled is unusually greasy. Chrome leather reinforced with steel ribbons placed lengthwise; oversized palm patch laps base of fingers, for added protection and service. For heavy jobs only.

No. 617—Short glove, 2" band.  
No. 677—Same, 4" gauntlet.



Safeguards  
No. 12072  
(Gauntlet)  
No. 11709  
(Hand guard)



Safeguard  
No. 617

### Steel Sewed—Special Palm Patch

General purpose glove; gives utmost service, steel sewed—rip-proof. A strong patch of chrome tanned cowhide extending over palm and up fingers as shown; extra wide strap around thumb seam. One of the most popular gloves in our line.

No. 11331—Short glove, 2" band.  
No. 11895—Same, 4" gauntlet.



Safeguard  
No. 12702

### Steel Ribbons—Vertical—Finger Tips Only

Chrome tanned cowhide gauntlet reinforced with steel ribbons placed vertically on thumb and finger tips only. For use with reversible handguard as pictured (Handguard No. 11709—see Handguard section). Combination highly efficient for handling steel sheets.

No. 12072—4" gauntlet.  
No. 11709—Reversible handguard—rubber

See Other Handguards, Page 10



Safeguard  
No. 11331

### Steel Ribbons—Diagonal—Special Palm Patch

Specially designed for handling sheets or any job that gives excessive wear on palm just below the first two fingers. Extra leather patch on palm beneath first two fingers. Reinforced with steel ribbons diagonally placed. Extra wide thumb strap. Glove sewed with steel thread.

No. 12702—4" gauntlet.

### Chippers Mitten

Chrome tanned cowhide one-fingered mitt. Carries felt pad securely sewed inside back for protection of knuckles. Steel sewed throughout. Comfortable fit and excellent wearing qualities.

No. 12016—Wrist length chippers mitt.  
No. 12120—Same with 4" gauntlet.



Safeguard  
No. 12016



# MITTENS • ARM PROTECTORS

## Steel-Reinforced Mitten

Long-wearing mitten of chrome tanned cowhide reinforced with steel ribbons tightly clinched over strips of tough leather. Thumb reinforced with extra patch. Entirely sewed with steel thread.

No. 681—Wrist length mitten.

~~No. 674—Same, steel reinforced, no leather strips.~~

Suggest No. 681



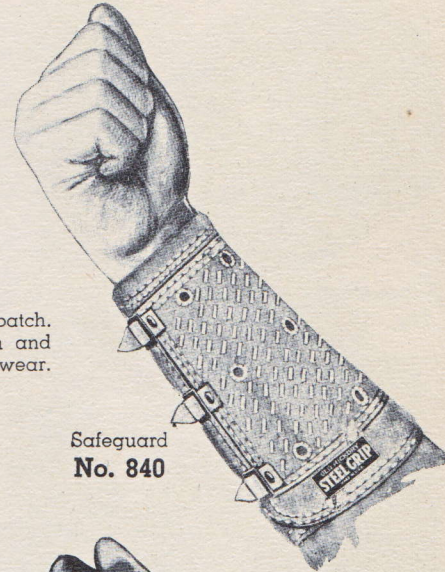
Safeguard  
No. 681

## Steel Sewed Mitten—Palm Patched

Chrome tanned cowhide with full leather palm patch. Palm patch extends up the thumb to reinforce crotch and around index finger side at the point of greatest wear.

No. 688—Wrist length.

No. 682—Same, patch steel reinforced.



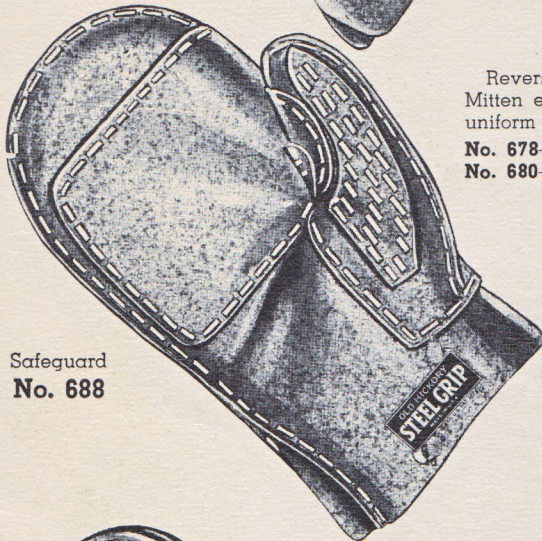
Safeguard  
No. 840

## Steel Sewed Mitten—Reversible

Reversible—worn on either hand, gives double service. Mitten entirely sewed with steel. Chrome tanned cowhide of uniform weight and quality.

No. 678—Wrist length mitten.

No. 680—Same with 4" gauntlet.



Safeguard  
No. 688

## Arm Protectors—Leather on Felt or Cotton

Absorbent wool felt, with leather patch diagonal steel reinforced. Patented nine-hole ventilation. Adjustable to any arm; instantly released. Absorbs perspiration, ventilates arm and will not get hard or stiff.

No. 840—9" arm protector. Patch 6".

~~No. 12849—Same, with rubber patch. See No. 840~~

No. 12961—Similar to No. 840, felt base, cotton duck lined



Safeguard  
No. 802

## Arm Protectors—All Leather, Steel Reinforced

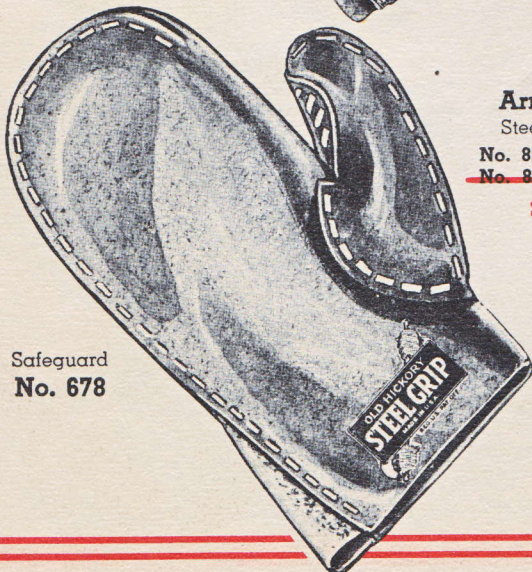
Steel reinforced leather patch on full leather base.

No. 802—7" long, patch 6½". No. 806—9" long, patch 6½".

~~No. 800—7" long, patch 4". No. 804—9" long, patch 4".~~

Suggest No. 802

Suggest No. 806



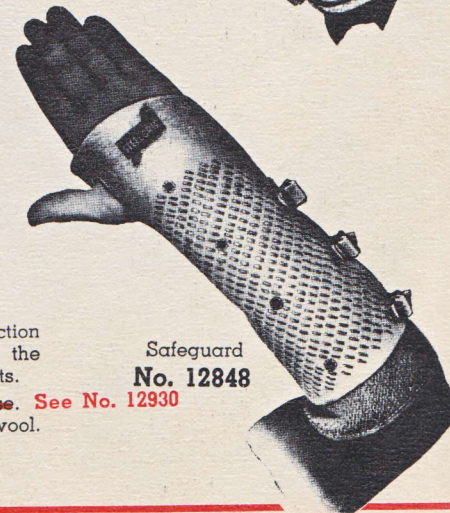
Safeguard  
No. 678

## Arm Protectors—Extension Type

New arm protector that gives added wrist protection required on many operations—"anchored" over the thumb. Always in correct position to prevent cuts.

~~No. 12848—Steel reinforced leather, wool felt base. See No. 12930~~

No. 12930—Same with cotton duck base instead of wool.



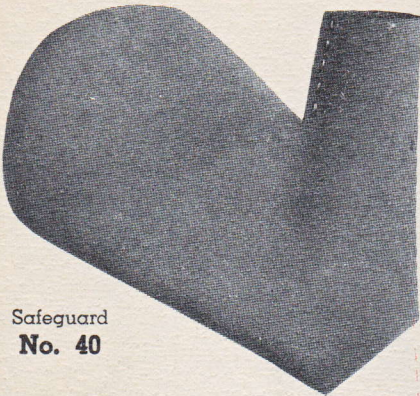
Safeguard  
No. 12848

OLD HICKORY  
**STEEL GRIP**

MADE IN U.S.A.

REG. U.S. PAT. OFF.

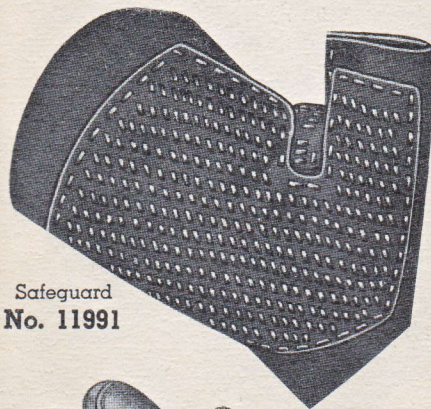
# HAND GUARDS



Safeguard  
No. 40



Safeguard  
No. 11435



Safeguard  
No. 11991



Safeguard  
No. 11850

## Plain Hand Pads

Standard type hand leather. Chrome tanned cowhide of uniform weights. With and without steel ribbon reinforcement; also with one or two layers of asbestos for the extra hot job.

No. 20—Plain, 6"x8½". No. 25—Plain, 7"x9".  
No. 30—Same, steel reinf. No. 35—Same, steel reinf.  
No. 50—Leather with 2 layers asbestos, steel reinf., 7"x11" (not illustrated).

~~No. 55—Same as No. 50 with one layer asbestos.~~

Suggest No. 50

## Thumb-type Hand Pads

Open back, combines the fit of a mitten, with coolness of a hand pad. Uniform heavy weight chrome tanned cowhide. Made in three types—(1) plain, (2) with palm patch and (3) with steel-reinforced palm patch.

No. 40—Chrome leather, plain.  
~~No. 12423—Same, in sheet rubber. See No. 40~~  
No. 11435—Leather with palm patch.  
~~No. 11640—Same, rubber patch. See No. 11435~~  
No. 11991—Chrome leather with steel reinf. palm patch.

## Reversible Handguards

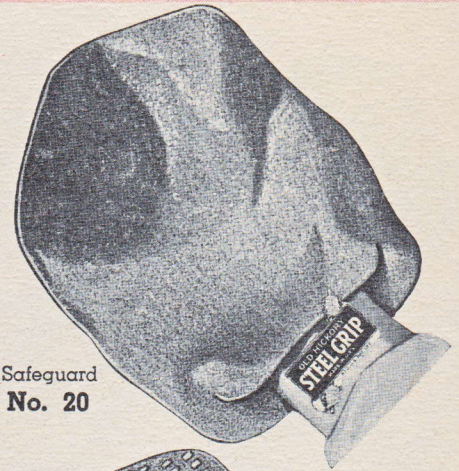
New design that has established itself as a safeguard of greatest efficiency for wide variety of handling jobs. May be worn on bare hand or over leather or cotton gloves. Reversible—worn on either hand—gives double wear. In 6", 7" and 7½" lengths. Made in plain chrome leather, steel-reinforced leather, rubber (see illustration glove No. 12072) wool felt, cotton webbing and asbestos. Detachable thumb (No. 12197) may be used if guard worn over bare hand. Wool felt and cotton webbing handguards are especially desirable for handling oily materials.

No. 12237—Chrome leather, steel-reinforced (7").  
No. 11754—Same, 6".  
No. 12226—Chrome leather, plain (7½").  
No. 11753—Same, 6".  
No. 12197—Detachable thumb (see No. 12226).  
No. 12055—Wool felt (6").  
No. 12307—Cotton webbing (6").  
~~No. 11709—Rubber (6") (see No. 12072). See No. 11753~~  
~~No. 12220—Asbestos (7½"). See No. 250~~

## Finger Guards

Illustration shows just one of more than 100 styles of guards for thumb and fingers, individually or in various combinations. Write special requirements. Made in chrome leather—plain, patched and steel reinforced—asbestos, wool.

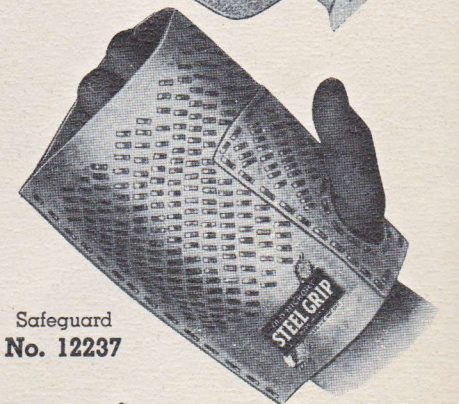
No. 11850—Chrome leather, patched.



Safeguard  
No. 20



Safeguard  
No. 30



Safeguard  
No. 12237



Safeguards  
No. 12226 (guard) No. 12197 (thumb)

# ASBESTOS SAFEGUARDS

STEEL-GRIP asbestos products shown in this catalog are manufactured from Herringbone weave cloth unless otherwise stated. This is your assurance of the utmost in protection and service. As in all other STEEL-GRIP safeguards, asbestos gloves and mittens are expertly designed, cut full and carefully made. All seams are double stitched.



Safeguard  
No. 200

## Plain Asbestos Gloves

Sturdy, roomy, well fashioned gloves. Double stitched to assure extra long life. Furnished lined and unlined.

- No. 200—Short glove.
- No. 210—Gauntlet glove.
- No. 220—23" length gauntlet.

Add letter "L" to number when wanted lined.



Safeguard  
No. 250

## Plain Asbestos Mittens

Mittens are roomy, rugged and well designed. Double stitched to assure extra long life. Furnished lined and unlined.

- No. 250—Short mitten.
- No. 260—Gauntlet mitten.
- No. 270—23" length gauntlet.

Add letter "L" to number when wanted lined.



Safeguard  
No. 230

## Leather Reinforced Asbestos

In the construction of our leather reinforced asbestos gloves and mittens we use special heat-resisting chrome tanned cowhide. Leather reinforcement adds materially to wearing qualities besides giving additional protection. Two types—palm only or complete wearing surface. May be had lined or unlined.



Safeguard  
No. 280

## Gloves

- No. 230—Short glove.
- No. 240—Same, Gauntlet glove.
- No. 225—Gauntlet glove.

## Mittens

- No. 280—Short mitten.
- No. 290—Same, Gauntlet mitten.
- No. 275—Gauntlet mitten.

Add letter "L" to number when wanted lined.

## Important

We have available the usual Commercial quality asbestos cloth and will furnish prices on request. Remember, however, quality counts—especially in asbestos safeguards. Be sure to specify lined or unlined when ordering.

Asbestos gloves and mittens may be ordered in pairs, all rights, all lefts or any combination of rights and lefts at no additional cost. This service may mean big saving in your asbestos protection cost.



Safeguard  
No. 225



Safeguard  
No. 275

OLD HICKORY  
**STEEL GRIP**

MADE IN U.S.A.

REG. U.S. PAT. OFF.

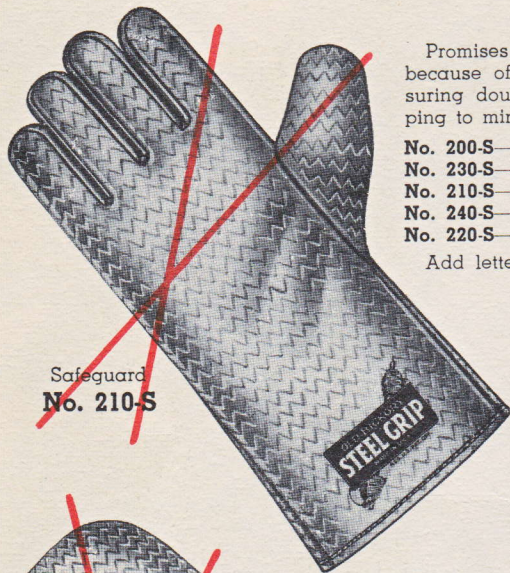
# ASBESTOS MITTS

## Reversible Asbestos Gloves

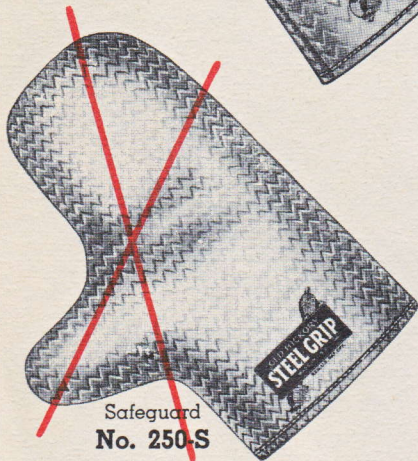
Promises to displace ordinary right and left pattern gloves because of its economy. Comfortably worn on either hand, insuring double wear. No seams in palm or back, reducing ripping to minimum. All seams double stitched. Lined and unlined.

- No. 200-S—Short glove.
- No. 230-S—Same, leather reinforced palm, back, thumb.
- No. 210-S—Gauntlet glove.
- No. 240-S—Same, leather reinforced palm, back, thumb.
- No. 220-S—Extra length (23") reversible gauntlet.

Add letter "L" to number when wanted lined.



Safeguard  
No. 210-S



Safeguard  
No. 250-S



Safeguard  
No. 265

## Reversible Asbestos Mittens

Popular safeguard. Roomy, easy to slip on and off. Gives double service, worn on either hand. Double stitched. Lined or unlined.

- No. 250-S—Short mitten.
- No. 280-S—Same, leather reinforced palm, back, thumb.
- No. 260-S—Gauntlet mitten.
- No. 290-S—Same, leather reinforced palm, back, thumb.
- No. 275-S—Full leather reinforcement, gauntlet.

Add letter "L" to number when wanted lined.

## One-Fingered Asbestos Mitten

Well fitting, roomy pattern in which the seam on the back has been eliminated—thus decreasing possibility of ripping. May be had lined and unlined. Double stitched for extra service.

- No. 255—Short mitten.
- No. 265—Gauntlet mitten.

Add letter "L" to number when wanted lined.

## Enamelers Mitts and Cover Mitts

In asbestos mittens for enameling, three factors are of prime importance—all splendidly provided for in each of the STEEL-GRIP asbestos safeguards we offer for this difficult class of work: (1) Adequate protection from heat, (2) Longest possible life, (3) Roominess, assuring ventilation and immediate slipping on and off.

- No. 10780—Wool lined right and left pattern.
- No. 10781—Cover mitt for use with No. 10780.
- No. 12998—Reversible, wool lined.
- No. 12999—Cover mitt for use with No. 12998.

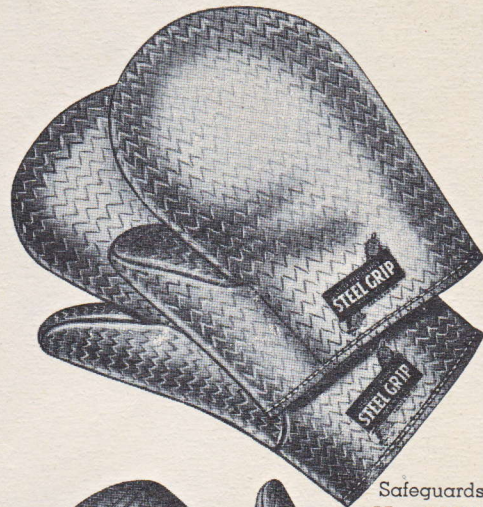
## "Quilted" Asbestos Mitten

Sturdy, reversible mitten. Especially suitable where materials handled are sharp or rough. Entire wearing surface "quilted" to wool felt on inside of mitten, minimizing shredding or fraying of asbestos for longer life. Wool lined. Seams double stitched.

- No. 12022—"Quilted" gauntlet mitten, lined.



Safeguards  
No. 10780  
(mitten)  
No. 10781  
(cover mitt)

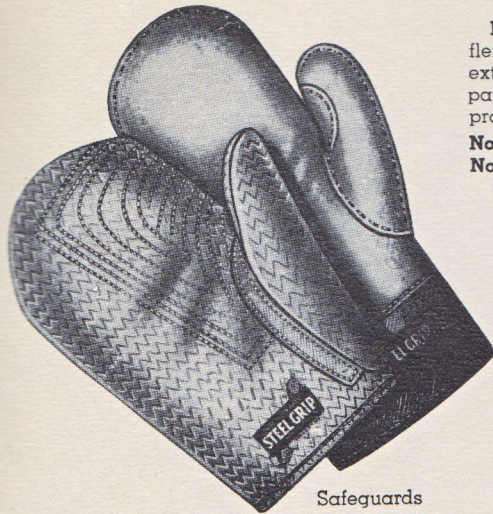


Safeguards  
No. 12998  
(mitten)  
No. 12999  
(cover mitt)

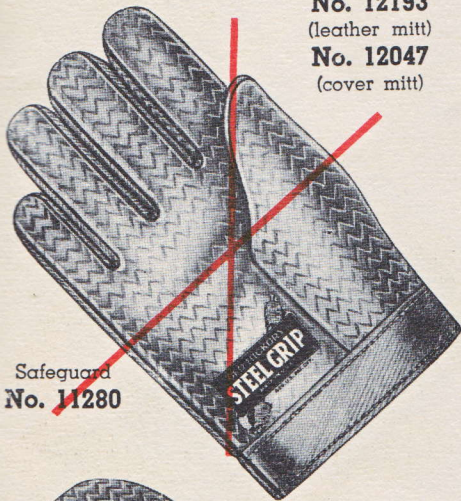


Safeguard  
No. 12022

# ASBESTOS CLOTHING



Safeguards  
**No. 12193**  
 (leather mitt)  
**No. 12047**  
 (cover mitt)



Safeguard  
**No. 11280**



Safeguard  
**No. 12997**

## Combination Mitt for Die Casting

**Reversible mitten** of special chrome tanned cowhide; soft flexible with high heat-resisting qualities; lined with wool extending up wrist. Steel stitched. **Cover mitt**, asbestos with patch of asbestos inside palm and back "quilted" to mitten proper, making for minimum of fraying at points of wear.  
**No. 12193**—Lined chrome leather reversible mitten.  
**No. 12047**—Asbestos cover mitt, for use with No. 12193.

## Light Weight Asbestos Glove

Light weight inexpensive asbestos hand protection. Palm, thumb and fingers of basket weave asbestos cloth—back of hand cotton flannel. Double stitched.  
**No. 11280**—Short glove.

## Asbestos Mitten—Patched Palm

Sturdy full length gauntlet mitten, patched with asbestos on palm and thumb. Entire mitt made of Herringbone asbestos cloth. Lined with wool. Double stitched.  
**No. 12997**—Lined gauntlet mitten.

## "Fire-Fiter" Asbestos Suit

Our famous "Fire-Fiter" asbestos suit of Herringbone asbestos cloth, all seams double stitched. Includes helmet, shirt, pants, gloves, and shoes. When ordered complete, packed in suitcase with directions for use. **HELMET** has isinglass vision. Will not break or shatter. Drops well over shoulders in front and back. **SHIRT** slips over shoulders quickly—no hooks to come unfastened or pull off. This is not a coat; coat can be supplied in its stead if specified. **GLOVES** are our standard No. 210-L. **PANTS** cut full to fit any size man. Supplied with buttons for suspenders and also belt. **SHOES** heavily sewed and reinforced with leather. Buckle fastening. **SUIT** may be ordered complete or as separate items.

Suit complete—**No. 450.**

Helmet—**No. 451.**

Shirt—**No. 452.**

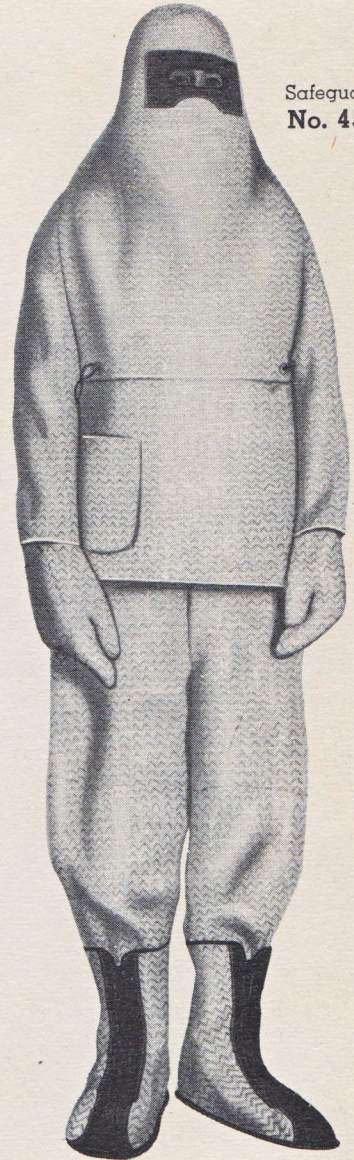
Coat—**No. 420.**

Gloves—**No. 210L.**

Pants—**No. 453.**

Shoes—**No. 454.**

**NOTE:** Coat and pants may be had combined in "one-piece" or jumper suit style if desired. Slightly lower first cost than separate units but impossible of replacement part by part if damaged. Also slower to put on. Jumper suit (coat and pants in one piece)—**No. 435.**



Safeguard  
**No. 450**



HANG IN CONVENIENT DRY LOCATION

**FIRE-FITER**

ASBESTOS SUIT WILL FIT ANY SIZED MAN

USE ONLY IN CASE OF FIRE

**DIRECTIONS**

1. PUT ON PANTS
2. PUT ON SHOES
3. PUT ON SHIRT
4. PUT ON GLOVES
5. PUT ON HELMET

**SUGGESTIONS**

THIS SUIT IS TO BE WORN OVER YOUR REGULAR CLOTHES

**BE SURE—**

PANTS ARE TUCKED IN SHOES

SHIRT BELT AND OPEN SHOES

HELMET IS SECURELY WORN

**CASE IS LOCKED—TO OPEN DASH ON GROUND OR BREAK LOCK**

—MATERIAL—GLASS—COMPOSITION—SANDWICH—GLASS—

**OLD HICKORY**  
**STEEL GRIP**  
 MADE IN U.S.A.

REG. U.S. PAT. OFF.

# WELDER'S GLOVES

The STEEL-GRIP line of welder's safeguards are expertly designed for comfort, service and protection. If your welding operations demand special protection, we offer you the service of our designing department. Write us.

## NEW One-Piece-Back Pattern

The new improved one-piece-back may be had in a gauntlet glove, one finger mitten and full mitten. Entire back, cut in one piece from our special tanned heat-resisting, shrink-proof leathers, eliminates burning through and ripping of seams on back of hand. Wool heat-breaker stitched inside back provides efficient insulation against heat throughout gloves' entire life. Wide strap protects and reinforces thumb seam. Other seams welted for extra strength at points of greatest wear.

- No. 13475—New one-piece back gauntlet glove.
- No. 13432—New one-piece back one fingered mitten.
- No. 13545—New one-piece back gauntlet full mitten.

## Welder's Gauntlet—Gunn-cut Pattern

Backed by years of successful service—made on the comfortable gunn-cut pattern from our special tanned leathers. Inseam sewed. Thumb seam and seam at base of two center fingers reinforced with extra leather straps. Leather apron protects and reinforces seam attaching cuff to hand. Fully lined with cotton fleece.

- ~~No. 940—Welder's gauntlet with adjustable strap.~~ Suggest No. 950
- No. 950—Same without strap on cuff.

## Welder's Gauntlet—Solid Palm—Patched Back

Popular type with many welders, chrome leather patch on back of hand. Leather apron around entire glove reinforces and protects seam attaching cuff to hand. Inseam sewed. Glove not lined.

- ~~No. 12700—Welder's gauntlet, left hand patched.~~ Suggest No. 14016
- No. 14016—Welder's gauntlet, both hands patched.

## Welder's Gauntlet—One Piece Back—Gunn-cut

New one-piece-back glove in the popular gunn-cut pattern. Middle fingers are set in palm assuring absolute comfort to wearer. New flat seam eliminates binding and adds extra life. Otherwise glove constructed like the No. 13475.

- No. 13900—Welder's gauntlet, one-piece-back, gunn-cut.



Safeguard  
No. 13475

### NEW—SPECIAL FEATURES—NEW

- 1—Heat-resistant and shrink-proof leathers.
- 2—One piece back—no seams
- 3—Wool heat breaker, sewed inside glove.
- 4—Welted seams at points of greatest wear.
- 5—Wide strap protects and reinforces thumb seam.



Safeguard  
No. 13432



Safeguard  
No. 13545



Safeguard  
No. 950

~~Safeguard  
No. 940~~



~~Safeguard  
No. 12700~~



~~Safeguard  
No. 13900~~

# AND PROTECTIVE CLOTHING



Safeguard  
No. 960

### Welder's Gauntlet—Solid Palm

Cool, comfortable, fully lined with cotton fleece. Seams on back of glove made rip and burn-proof by special sewing. Apron protects and reinforces seam attaching gauntlet. Special chrome tanned cowhide—heat-resisting and uniform weight.

No. 960—Welder's gauntlet glove.

### Welder's Gauntlet—Heavy Duty Type

For heavier jobs, where material handled is exceptionally rough or sharp, many welders and burners have shown preference for this all steel stitched gauntlet. Chrome tanned cowhide, extra weight in palm. Outseam. All seams except thumb to palm stitched with steel thread, making gloves practically rip-proof. Apron protects and reinforces seam attaching gauntlet. Unlined.

No. 660-W—Steel stitched welder's gauntlet.



Safeguard  
No. 660-W

### Welder's Gauntlet—Asbestos

Herringbone weave asbestos cloth. Glove is roomy, cool and comfortable—lined with fleece cotton. All seams double stitched, insuring utmost in protection and service.

No. 210-L—Welder's asbestos gauntlet.

No. 210—Same, unlined.

### Welder's Bib-Type Aprons

All leather and asbestos aprons equipped with  $\frac{5}{8}$ " webbing neck and waist straps with adjustable hook and slide fastener. Flame-proof duck aprons fitted with eyelet and leather thong fastening. In following materials and sizes:

**Chrome Leather**  
No. 145—24x30.  
No. 148—24x36.  
No. 155—24x42.  
No. 158—24x48.  
No. 159—24x54.

**Flame-Proof Duck**  
No. 100—29x30.  
No. 120—29x36.  
No. 130—29x42.  
No. 140—29x48.  
No. 141—29x54.

**Asbestos**  
No. 125—24x30.  
No. 128—24x36.  
No. 135—24x42.  
No. 138—24x48.  
No. 139—24x54.



Safeguard  
No. 210-L

### Welder's Slit-Type Apron

Slit to crotch, with two buckles and straps around each leg. Adjustable web fastening at neck and waist. Any stock bib-type apron as listed above may be had slit to crotch with one or two buckle adjustments or eyelet and thong. See price list for charges.

No. 12177—Slit-type apron, chrome leather, 24"x48".

### Welder's Chaps

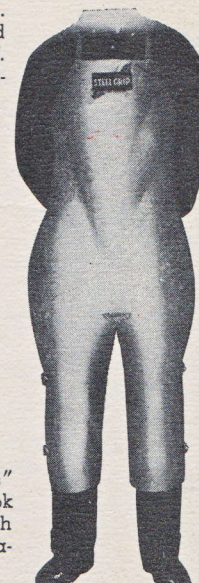
Complete chrome leather trouser protection in front, cut away in back to reduce weight. Cool. Worn over regular pants. Adjustable webbing belt.

No. 11508—Welder's chaps without bib.

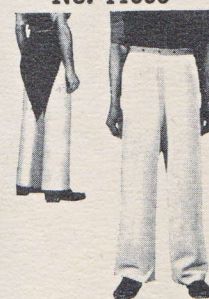
No. 12222—Same, with bib attached.



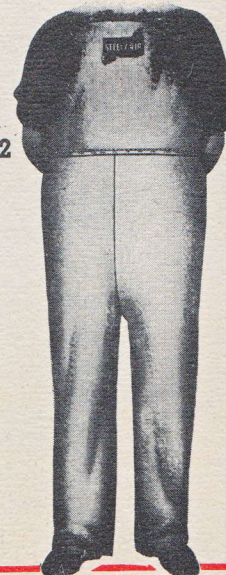
Safeguard  
No. 158



Safeguard  
No. 12177



Safeguard  
No. 11508



Safeguard  
No. 12222

**OLD HICKORY  
STEEL GRIP**

MADE IN U.S.A.

REG. U.S. PAT. OFF.

# WELDER'S APPAREL

## Welder's Sleeves

Designed for comfort and service. 12" and 18" standard lengths. Chrome leather, flame-proof duck or asbestos. Two snap fasteners at wrist to insure tight fit. Special lengths on request.

Chrome Leather	Flame-proof Duck	Asbestos
No. 891—12"	No. 871—12"	No. 881—12"
No. 892—18"	No. 872—18"	No. 882—18"

## Shoulder Length Sleeves

Full protection up over shoulder to the neck. Eyelets and leather thongs for adjustment. Two snap buttons at wrist. Reinforced with steel stitching for longer service.

No. 10082—Chrome tanned cowhide.
No. 10187—Flame-proof duck.
No. 10865—Asbestos.

## Welder's Half-Jacket

Welder's half-jacket, or cape type sleeve—chrome tanned cowhide. Fits comfortably over shoulders—no binding. Three sizes—small, medium and large. Detachable bib. Snap fastenings throughout. Complete protection for shoulders, chest and arms.

No. 13868—Half-jacket complete with detachable bib.
No. 13725—Half-jacket only.
No. 13705—Bib only.
No. 13141—Half-jacket without bib fasteners.
No. 13862—Half-jacket and bib one-piece combination.

## Welder's Chrome Leather Overall

For welders and other jobs extra hard on clothes. All seams thread and steel stitched for long, hard service. Give suit size and inside pant leg length.

No. 13587—Chrome leather overall.

## Welder's Coat and Pants

Chrome tanned cowhide—designed for comfortable fit. Coat buttons up to neck, snap buttons at wrist. Give chest measure and under arm sleeve length. Pants with belt loops or detachable suspender buttons as specified. Give waist and inside leg measure.

No. 481—Welder's coat. No. 486—Welder's pants.

## Welder's Leggings

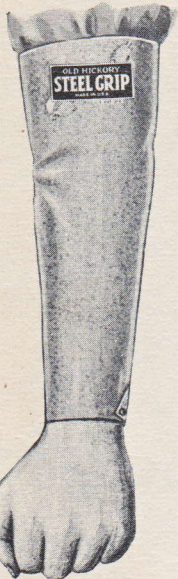
Chrome tanned leather over steel spring frame. Duck lined for cool, comfortable leg protection. Easy to put on and take off. Flare fits snug over ankle and shoe; will not curl.

No. 340-W—Welder's chrome leather legging.

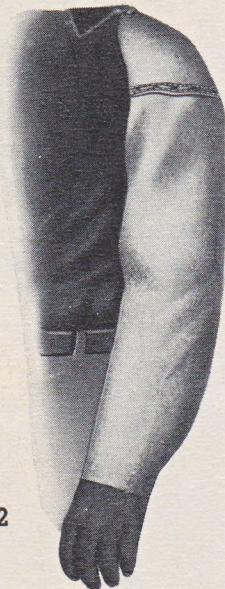
## Welder's Spats

Spat shown made of chrome tanned leather with large bark tanned flare. Buckles at back—strap under instep holds spat securely in position.

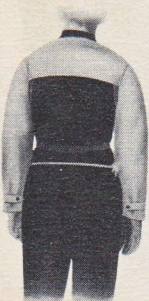
No. 740—Chrome leather.
No. 730—Flame-proof duck.
No. 735—Asbestos.



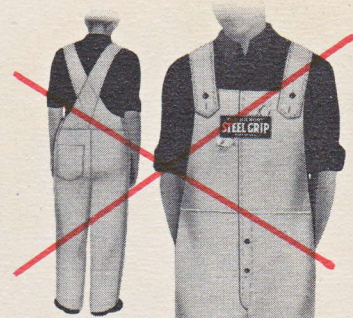
Safeguard  
No. 892



Safeguard  
No. 10082



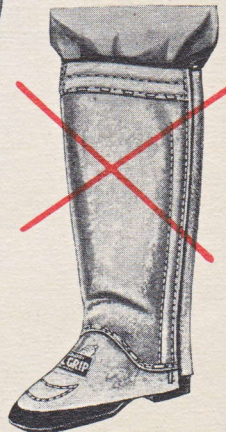
Safeguard  
No. 13868



Safeguard  
No. 13587



Safeguard  
No. 340-W



Safeguards  
No. 481  
(coat)  
No. 486  
(pants)



Safeguard  
No. 740

DISCONTINUED  
FOR REPLACEMENT  
SUGGESTED PRICE  
OR FURNISH TO US



# LEGGINGS • SPATS • SHINGUARDS



Instantly Off



Easily On

Safeguard No. 347

The STEEL-GRIP line of leg and foot protection is complete—backed by over twenty-five years of successful research and design. Knee leggings for foundry use are made in SPRINGLESS, SPRING and our featured RENEWABLE SPRING construction. Other main types are hip leggings, spats, (plain and steel-reinforced), shinguards and knee and leg protectors. Unusual problems and hazards will have the careful attention of our designing department. Write us.

## Knee Leggings

Made in 3 types, each giving complete protection and thoroughly comfortable, easy to put on and take off. Made in 3 kinds of materials in each style.

**SPRINGLESS** . . . patented 9-hole adjustment permits fitting legs of all sizes with snug fit at top. Strap under heel prevents "crawling."

**SPRING TYPE** . . . air-pocket lining and patented spring design for comfort. Special close-fit collar. Tuck-in flap protects back of leg.

**RENEWABLE SPRING TYPE** . . . removable spring permits replacement of only spring or cover as needed. Proven practical and extra economical.

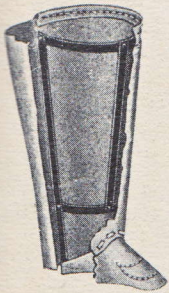
	Chrome Leather	Flame-proof Duck	Asbestos
Springless	No. 347	No. 345	No. 349
Spring Type	<del>No. 340</del>	<del>No. 300</del>	<del>No. 320</del>
Renewable Spring	No. 380	No. 360	No. 370

FOR DURATION REPLACED BY  
No. 340 SERIES Nos. 380, 360 AND 370

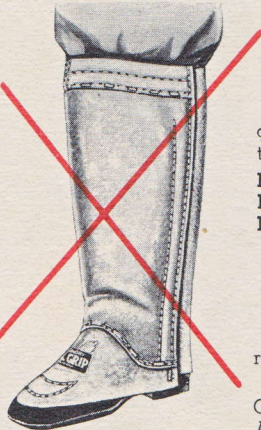
## Hip Leggings

Protection from floor to hip. Cut down the back to enable getting in and out readily. Steel stitched flare. Legging fastened to belt with leather strings through eyelets.

- No. 790—Chrome leather.
- No. 780—Flame-proof duck.
- No. 785—Asbestos.



Safeguard No. 340

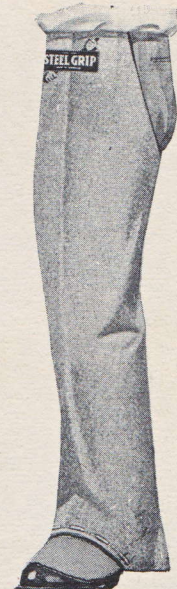


## Spats

Comfortable, light-weight, easy to put on and take off. Steel-reinforced spats for use where scrap is handled.

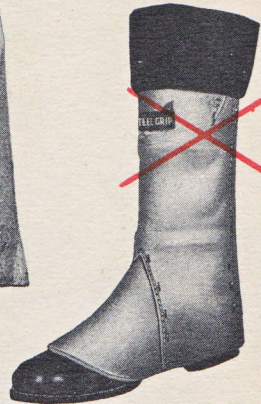
	11" Spring Type	7" Buckle Type
Chrome leather	See No. 380 <del>No. 12478</del>	No. 740
Asbestos		No. 735
Flame-proof duck	See No. 360 <del>No. 12482</del>	No. 730
Rubber (for acid)		No. 12023

No. 10076—Steel reinforced chrome leather.

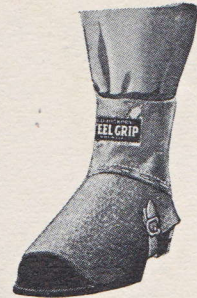


Safeguard No. 790

Safeguard No. 12478



Safeguard No. 10076



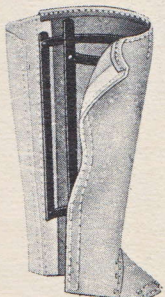
Safeguard No. 740



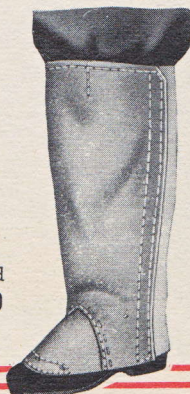
## Shin and Leg Guards

Fibre, felt lined shin guard—light weight, comfortable to wear over or under pant leg. Made also with knee guard. No. 11494 made with seven hardened steel stays, leather covered. Encircle shin bone, knee to ankle. Felt lined fibre knee guard attached to legging.

- No. 12748—Fibre shinguard, felt lined.
- No. 13950—Same, with knee guard.
- No. 11494—Spring type leg protector. Knee guard attached.



Safeguard No. 380



Safeguard No. 12748



Safeguard No. 11494



**OLD HICKORY**  
**STEEL GRIP**  
 MADE IN U.S.A.

REG. U.S. PAT. OFF.

# APRONS • COATS • PANTS



Safeguard  
 No. 148



Safeguard  
 No. 10864



Safeguard  
 No. 12207



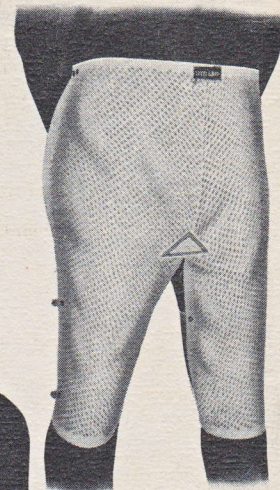
Safeguard  
 No. 12327

Design, material and quality of workmanship are all-important in the aprons and other types of safety clothing you purchase. The protection and service they give depend entirely on these factors. Write us if you do not see pictured or listed the equipment you require.

### Bib-type Aprons

Bib-type leather and asbestos aprons are equipped with adjustable neck bands and waist ties of 5/8" webbing. Flame-proof duck aprons with eyelets and leather thong. Special sizes on request.

<b>Chrome Leather</b>	<b>Flame-proof Duck</b>	<b>Asbestos</b>
No. 145—24x30.	No. 100—29x30.	No. 125—24x30.
No. 148—24x36.	No. 120—29x36.	No. 128—24x36.
No. 155—24x42.	No. 130—29x42.	No. 135—24x42.
No. 158—24x48.	No. 140—29x48.	No. 138—24x48.
No. 159—24x54.	No. 141—29x54.	No. 139—24x54.



Safeguard  
 No. 10773



Safeguard  
 No. 11394



Safeguards  
 No. 461  
 (coat)  
 No. 466  
 (pants)

### Special Aprons

We have designed and manufacture more than 500 different types of aprons. Just a few of these are illustrated on this page and listed below. Write us your specifications.

**Oiled Duck—No. 10864**—Size 35x45 with patch of same material, size 10x14.

**Oiled Duck, Reinforced—No. 12207**—Size 23x36. 12x18 chrome leather patch, STEEL-GRIP reinforced.

**Waist Type—No. 12327**—Chrome leather with adjustable web belt fastening. Size 18x28.

**Sheet Handlers—No. 10773**—Chrome leather slit-type apron, size 22x26 1/2—STEEL-GRIP reinforced. Same with extra steel-reinforced leather patch, size 10x20—No. 12569.

**Kick-Back—No. 11394**—Light weight, comfortable protection—for men working at rip saws—eliminates injuries from lumber kick-backs. Long record of successful use. Same, with front of apron leather covered—No. 13866.

### Coats, Pants, Jumper Suits

Expert design, comfortable fit and quality workmanship. For coat, specify chest measurement, length of coat desired and under sleeve length; for pants, waist and inside leg measure. No pockets unless specified.

	Coat	Pants	Jumper Suit
Flame-proof duck	No. 400	No. 410	No. 415
Flame-proof cotton suiting	No. 441	No. 446	No. 448
Chrome leather	No. 481	No. 486	No. 488
Asbestos	No. 420	No. 430	No. 435
Industrial khaki wool	No. 461	No. 466	No. 468
Blue wool suiting	No. 471	No. 476	No. 478

Suggest Nos. 400, 410, 415

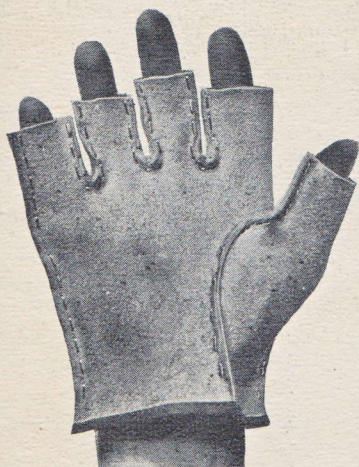


Safeguard  
 No. 478

# ALL RIGHT HANDS OR ALL LEFTS AT NO EXTRA CHARGE

All STEEL-GRIP gloves, mittens and hand leathers are quoted in pairs. AT NO ADDITIONAL EXPENSE, THEY MAY BE HAD IN ALL RIGHTS OR LEFTS TO THE DOZEN OR ANY ASSORTMENT OF RIGHTS AND LEFTS. This is a Safety service that: (1) assures 100% efficiency in hand protection; (2) eliminates that dangerous, badly worn glove; (3) cuts your protection costs. We suggest that you check now to see if on one or more of your operations the protectors used may be requisitioned profitably in rights and lefts instead of pairs.

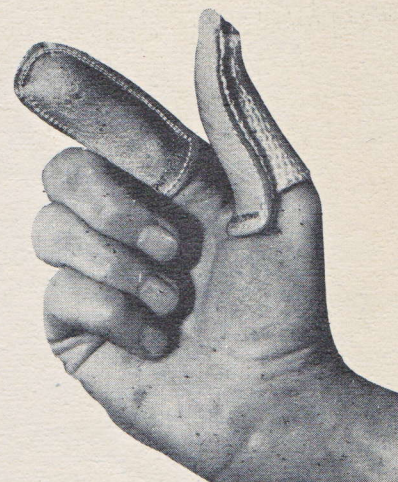
## FOUR NEW "STEEL-GRIP" SAFEGUARDS



Safeguard No. 14330

### Fingerless Glove—No. 14330

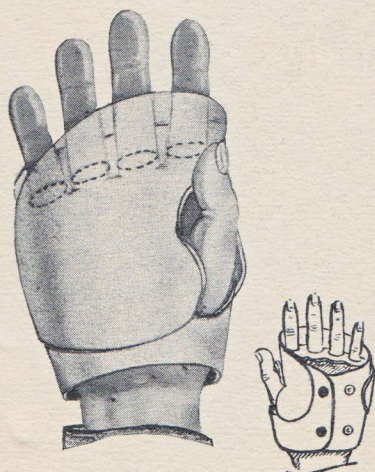
This new fingerless glove meets the requirements of operators who must have freedom of fingers and thumb—"touch" to pick up small parts, sheets, etc.—but, at the same time, protection for the palm, and especially between thumb and forefinger. Glove made of chrome tanned leather; steel stitched which eliminates possibility of ripping. Glove may be worn over bare hand or pulled over light weight glove. Three sizes: small for women, medium and large for men.



Safeguard No. 14169

### Finger Guard—No. 14169

A practical finger guard that combines the durability of leather and the flexible comfort of lastex. Clean, easy on, easy off, light weight. Gives protection on fingers and thumb in any combination. May be worn under gloves for extra protection and wear. Does away with tender skin due to use of tape. If worn with leather to the back of finger, the new guard protects knuckles from raps, cuts, abrasions. The lastex feature means always flexible, snug fitting and porous for ventilation. For buffers, polishers, sanders, trimmers, sorters, grinders, operators of punch presses, assemblers of small parts—both men and women.



Safeguard No. 13455

### Bundler's Handguard—No. 13455

Wherever sheets, cartons or cases made of corrugated paper or fibre board are handled there is always risk of hand injuries. This new fingerless handguard, designed especially for bundlers in the paper industry, reduces handling hazards and permits faster, better, safer work. Made of toughest chrome leather with extra leather patch over palm. In three sizes: small for women; medium and large for men. In pairs, or right or left hand only.

**Safeguard No. 13319**—Especially designed for handling metal sheets, stampings or sharp edged castings. Chrome leather gauntlet with extra leather patch covering palm and fingers—note way palm patch extends over forefinger where wear comes. Thumb seam heavily reinforced with wide leather strap. Entire palm and finger wearing surface reinforced with our newly developed semi-diagonal steel ribbons—more steel coverage for extra wear, extra protection.




Safeguard No. 13319



**OLD HICKORY**  
**STEEL GRIP**

MADE IN U.S.A.

REG. U.S. PAT. OFF.



DEPENDABLE  
SAFEGUARDS  
for  
INDUSTRIAL  
HAZARDS

